

Adams County, Washington CARA and VSP Update



Prepared by:

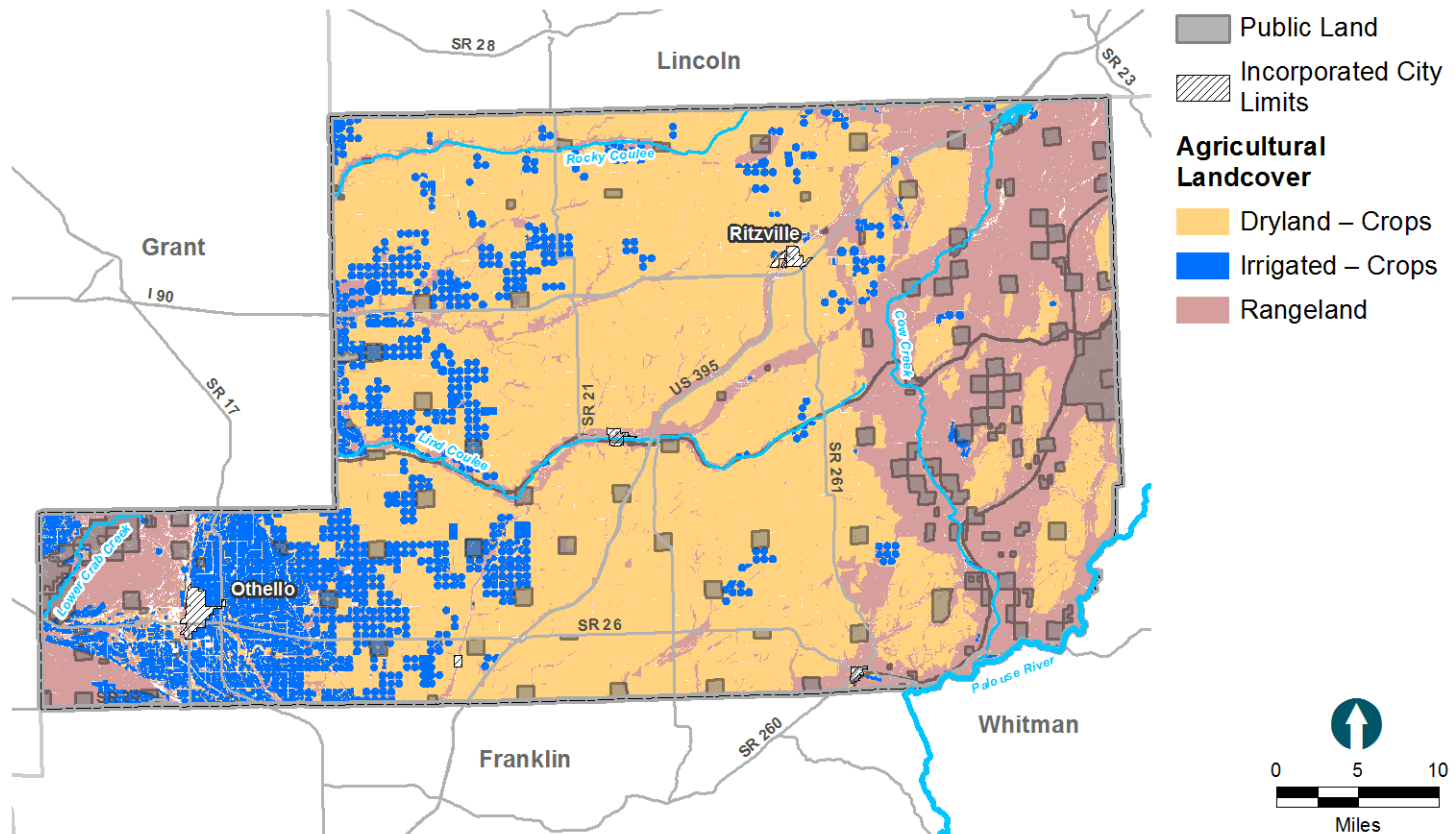
EA[®] EA Engineering,
Science, and
Technology, Inc., PBC

February 2017

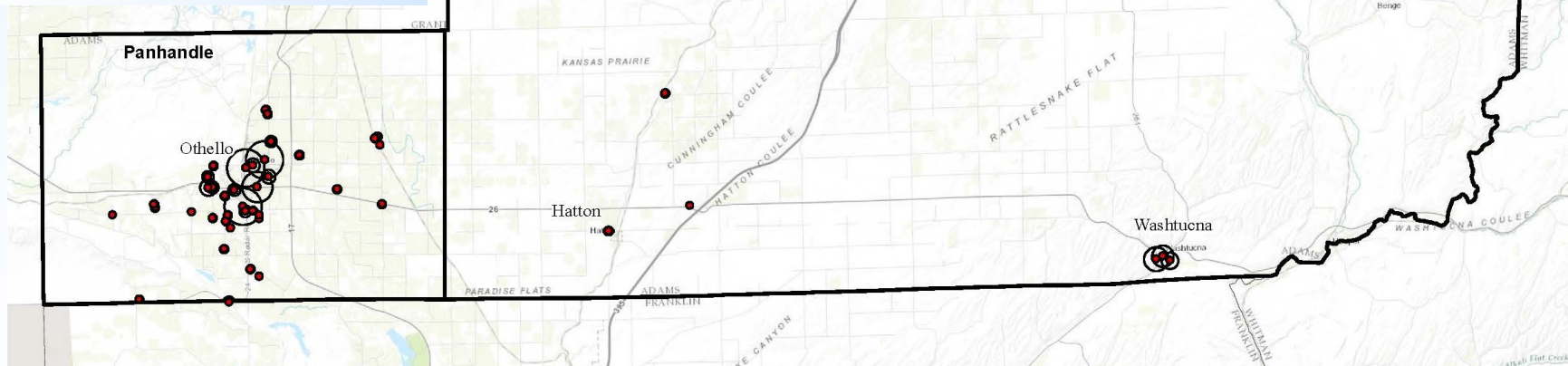
Outline

- **Adams County Hydrogeology,**
 - **Shallow and Deep Aquifers**
- **Adams County CARA Ordinance**
- **Public Systems in the County**
- **CARA Conclusions**

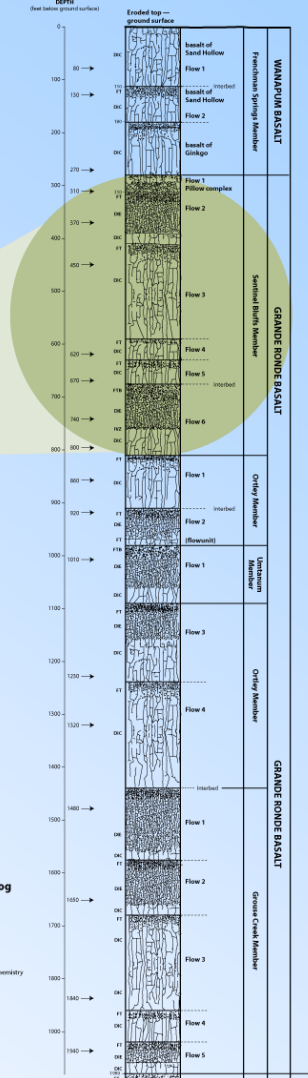
Adams County: 3 Surface Activities



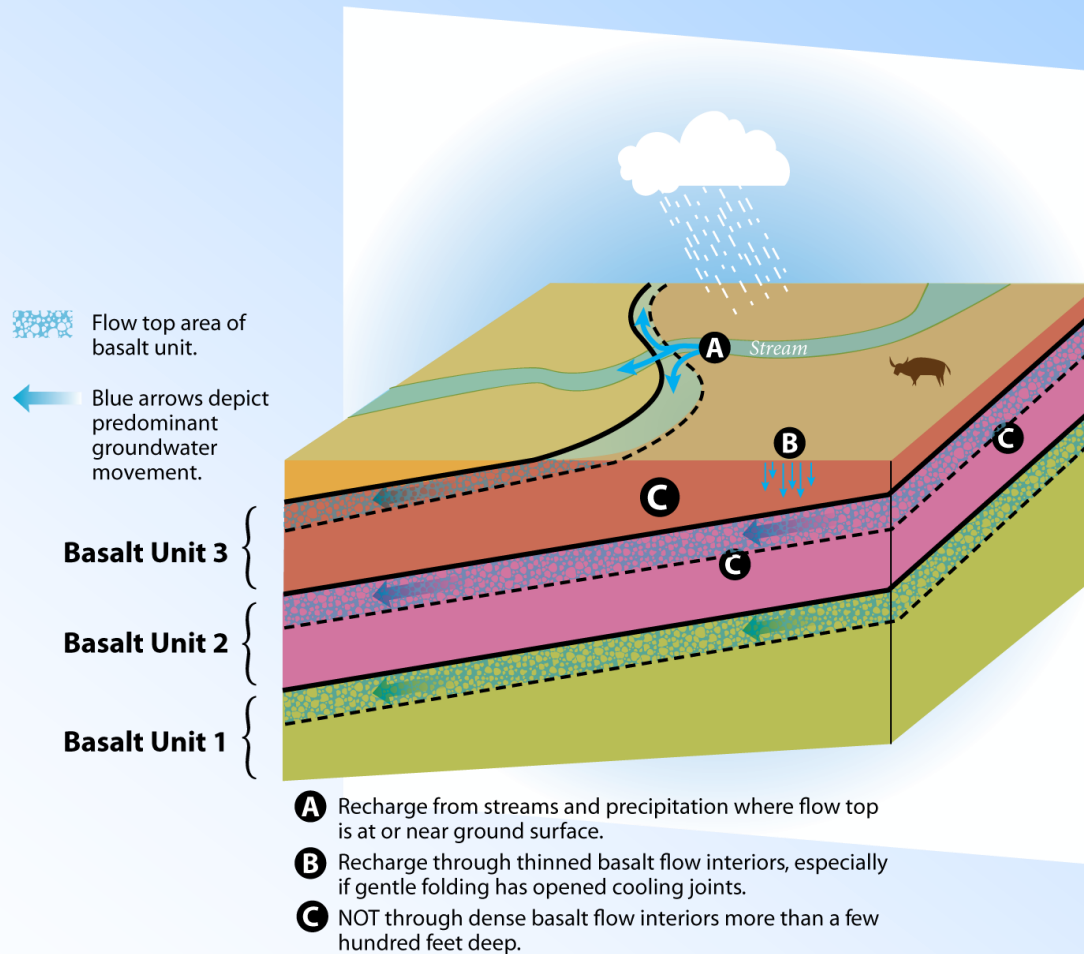
56 Public System Wells: 2 WHPA's Entirely in UGA



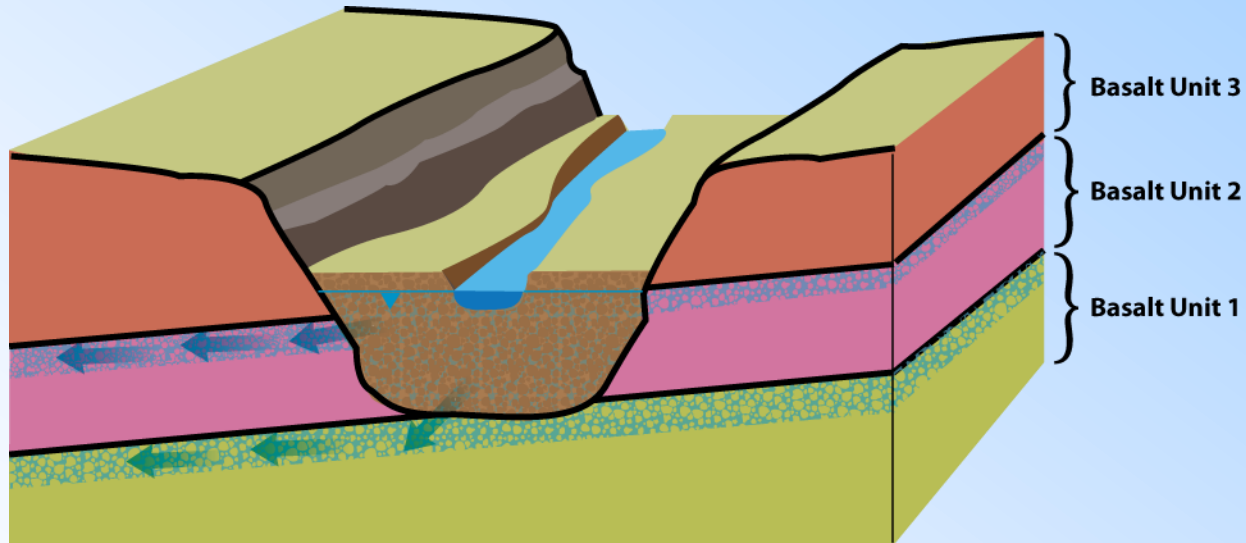
Logged by Terry L. Tolan,
Kennedy/Jenks Consultants, October 2001
with Geochem, December 2001



Recharge Areas



Recharge Areas (continued)



Groundwater in coulee fill gravel recharges interflow zones cross-cut by coulee.

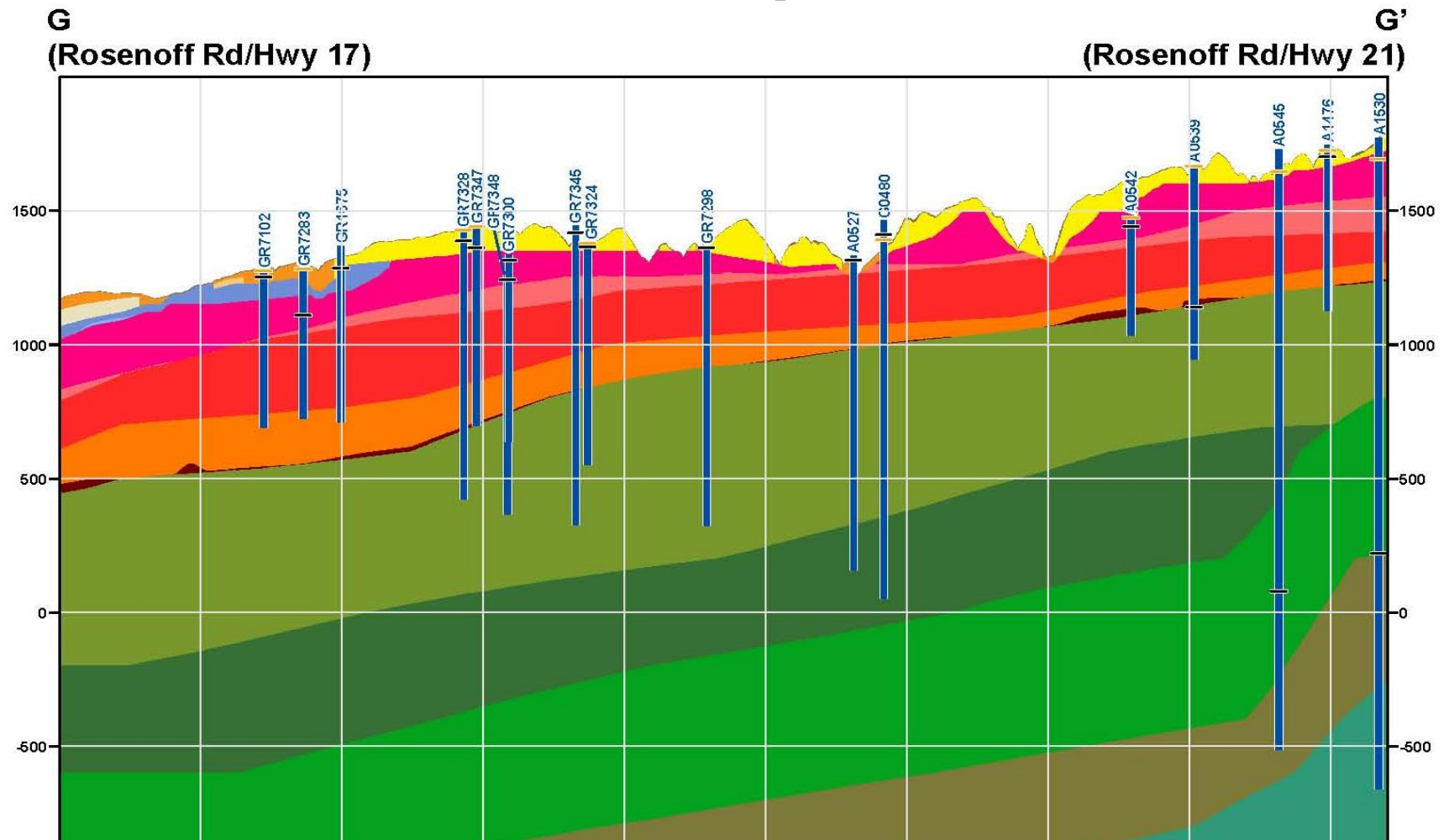
Blue arrows depict predominant groundwater movement.

Flow top area of basalt unit.

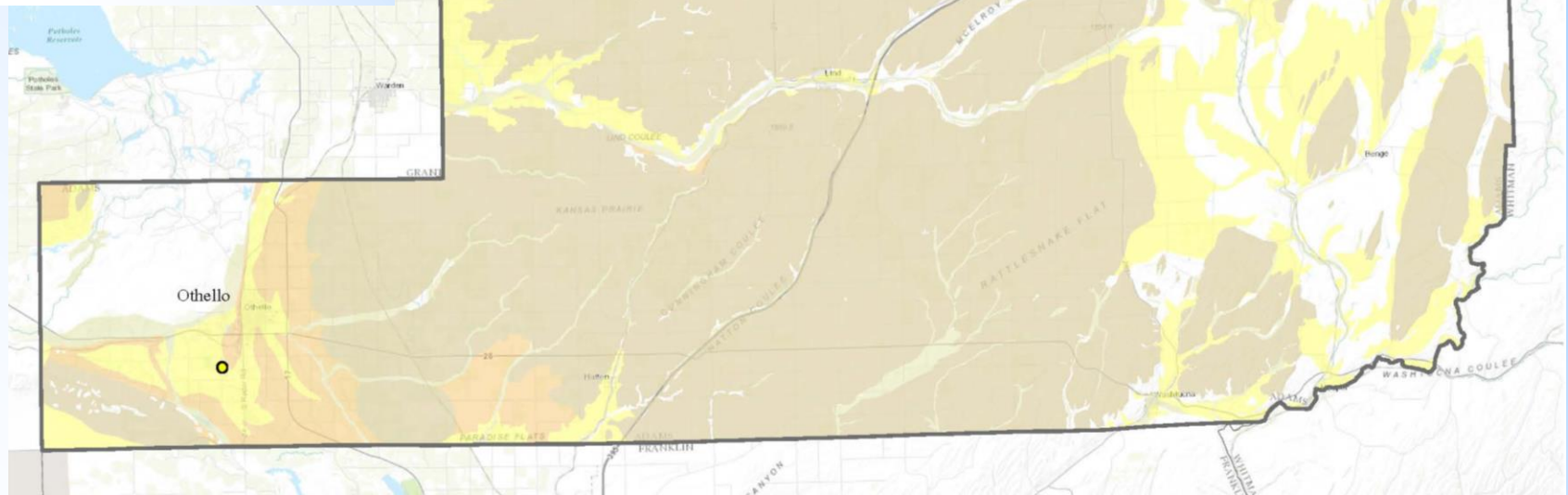
Adams County CARA Ordinance

- **Two components:**
 - Susceptibility to contamination
 - Areas where water-bearing intervals come to surface
- **Ecology Susceptibility Guidance:**
 - Shallower alluvial aquifer: high
 - Deeper aquifer: less
 - Confined: low
- **WPHA 10 year TOT not used, but is good guide:**
 - Shallow production within WHPA
 - Contamination source check

Three Tier Subdivision: Alluvial, Shallow Basalt, Deep Basalt

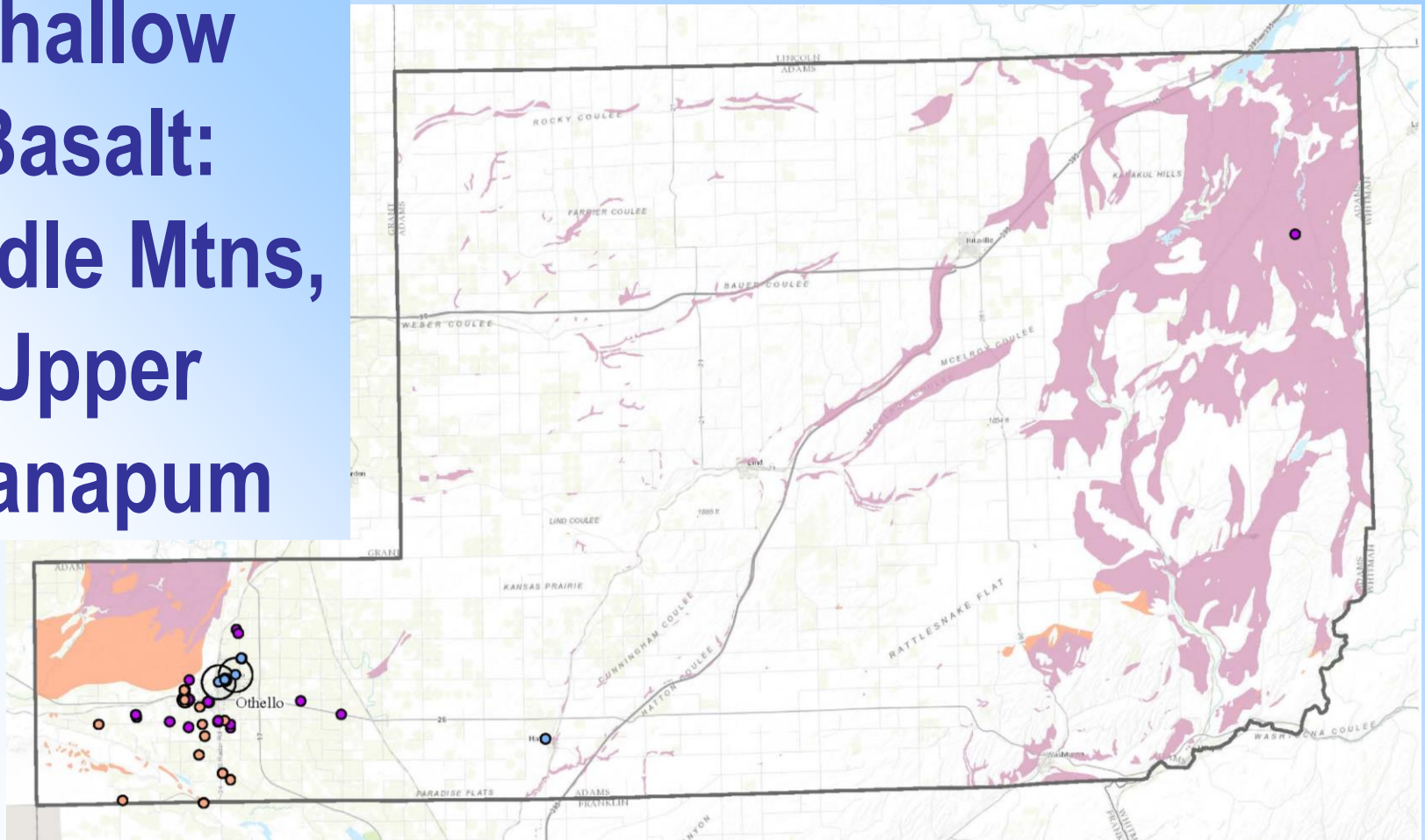


Alluvial Wells



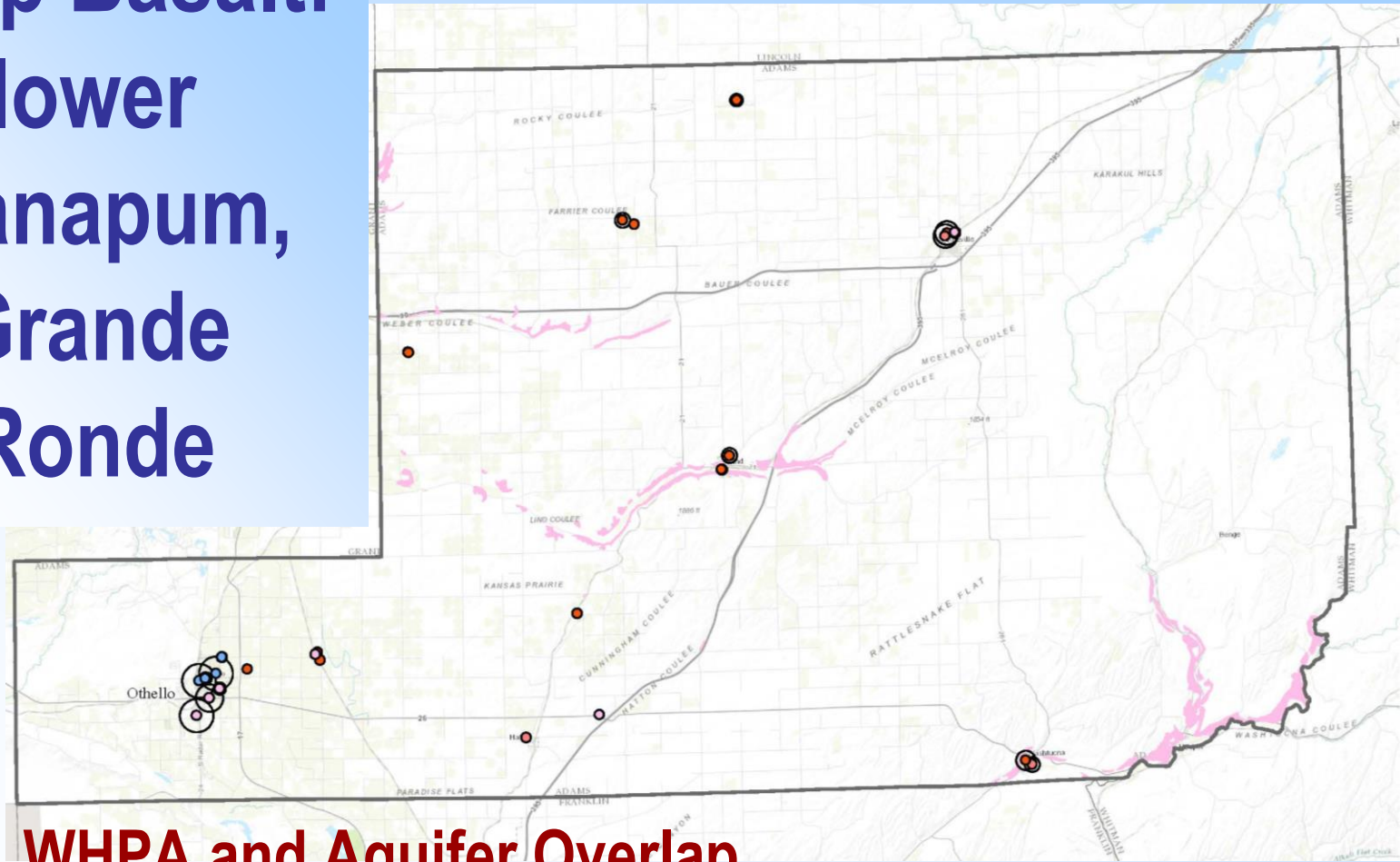
- **WHPA and Aquifer Overlap**
 - Susceptibility to contamination - high
 - Areas where water-bearing intervals come to surface – in WHPA

Shallow Basalt: Saddle Mtns, Upper Wanapum



- **WHPA and Aquifer Overlap**
 - Susceptibility to contamination – high to low, construction?
 - Areas where water-bearing intervals come to surface – varies

Deep Basalt: lower Wanapum, Grande Ronde



- **WHPA and Aquifer Overlap**
 - Susceptibility to contamination – low, check construction
 - Water-bearing intervals come to surface – not in WHPA

VSP and CARA Focus

- Alluvial wells: WHPA focus on land use.
- Shallow basalt wells: Mostly Panhandle, WHPA and landuse may intersect with recharge area.
- Deep basalt wells: Mostly in east, WHPA and landuse don't overlap. Recharge may be out of County.

